

CLM Series Inline

| Amps/Voltage | Accepts Wire | CLM Female | CLM Male | |
|--------------|--------------|------------|----------|--|
| 150A / 600V | #8 - #2 | CLM2F | CLM2M | A B C D E F G H J |

150 Amp "Mini" Devices

CAM Technology

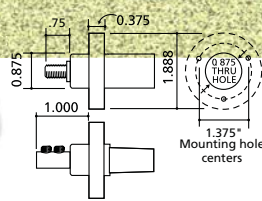
SINGLE PIN CONNECTORS

CLM Series Panel Mount

"Super Tough" Nylon Housing
(Hard Shell)

Standard products supplied with self-threading screws.
Optional mounting holes for 10-32 screws shown at right.
Add "X" suffix code.

| Amps/Voltage | Accepts Wire | CLM Female | CLM Male |
|--------------|--------------------------|---------------|---------------|
| 150A / 600V | 3/4" - 8 THREADED STUD | CLMFRS | CLMMRS |
| 150A / 600V | #8 - #2 DOUBLE SET SCREW | CLMFR2 | CLMMR2 |



CLSM Series Panel Mount

Santoprene Housing

NEW!

| Amps/Voltage | Accepts Wire | CLSM Female | CLSM Male |
|--------------|--------------------------|----------------|----------------|
| 150A / 600V | 3/4" - 8 THREADED STUD | CLSMFRS | CLSMMRS |
| 150A / 600V | #8 - #2 DOUBLE SET SCREW | CLSMFR2 | CLSMMR2 |



Cam Reducers

| Amps/Voltage | Part No. |
|--|------------------|
| 400A F to 150A F | CLMADFF |
| 400A M to 150A F | CLMADMF |
| 400A F to 150A M | CLMADFM |
| 400A M to 150A M | CLMADMM |
| NEW! 400A / 600V M to three 150A / 600V F | CLMAD3F |
| 400A / 600V M to three 150A / 600V F | CLMAD3FST |



Cam Technology Product Number Suffix Codes

Series CL, CLS, CLM + R = Panel Mount + Color + .OEM
 AD = Adapter
 F = Female
 M = Male

Example: CLMADMM-C.OEM

400 Amp Devices



CAM Technology

SINGLE PIN CONNECTORS

CL Series Inline

"Super Tough" Nylon Housing
(2-piece Hard Shell)

| Amps/Voltage | Accepts Wire | CL/CLS Female | CL/CLS Male | A | B | C | D | E | F | G | H | J |
|--------------|--------------|---------------|-------------|---|---|---|---|---|---|---|---|---|
| 400A / 600V | 2/0 - 4/0 | CL40FB | CL40MB | | | | | | | | | |
| 400A / 600V | #2 - 2/0 | CL20FB | CL20MB | | | | | | | | | |
| 400A / 600V | #6 - #2 | CL2FB | CL2MB | | | | | | | | | |

CLS Series Inline

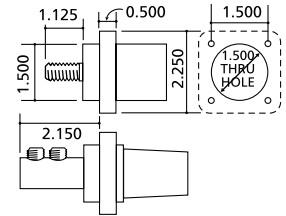
NEMA 3R & 4
Santoprene Boot



| Amps/Voltage | Accepts Wire | CLS/CLS Female | CLS/CLS Male | A | B | C | D | E | F | G | H | J |
|--------------|--------------|----------------|--------------|---|---|---|---|---|---|---|---|---|
| 400A / 600V | 2/0 - 4/0 | CLS40FB | CLS40MB | | | | | | | | | |
| 400A / 600V | #2 - 2/0 | CLS20FB | CLS20MB | | | | | | | | | |
| 400A / 600V | #6 - #2 | CLS2FB | CLS2MB | | | | | | | | | |

CL Series Panel Mount

"Super Tough" Nylon Housing
(Hard Shell)



| Amps/Voltage | Accepts Wire | CL/CLS Female | CL/CLS Male | A | B | C | D | E | F | G | H | J |
|--------------|----------------------|---------------|-------------|---|---|---|---|---|---|---|---|---|
| 400A / 600V | 2/0 - 4/0 | CL40FRB | CL40MRB | | | | | | | | | |
| 400A / 600V | #2 - 2/0 | CL20FRB | CL20MRB | | | | | | | | | |
| 400A / 600V | 1-1/4" threaded stud | CL40FRSB | CL40MRSB | | | | | | | | | |

CLS Series Panel Mount

Santoprene Housing



NEW!

| Amps/Voltage | Accepts Wire | CLS/CLS Female | CLS/CLS Male | A | B | C | D | E | F | G | H | J |
|--------------|----------------------------|----------------|--------------|---|---|---|---|---|---|---|---|---|
| 400A / 600V | 2/0 - 4/0 Double Set Screw | CLS40FRB | CLS40MRB | | | | | | | | | |
| 400A / 600V | #2 - 2/0 Double Set Screw | CLS20FRB | CLS20MRB | | | | | | | | | |
| 400A / 600V | 1-1/4" threaded stud | CLS40FRSB | CLS40MRSB | | | | | | | | | |

Cam Technology Product Number Suffix Codes

Series CL, CLS, CLM + Color + Mounting Holes for Panel Mount Devices + .OEM

Example: CLS40MRSB-AX.OEM

CAM Technology

CL/CLS/CLM Adapters

| | |
|----------------------|-------------------------|
| Reverse Hard 3Fer | F-M-M-M E (ONLY) |
| Reverse Hard 3Fer | F-M-M-M B (ONLY) |
| Hard 3Fer | M-F-F-F |
| Male to Male Coupler | M-M |
| Fem. to Fem. Coupler | F-F |
| Cam to Mole Lok | Cam M to Mole Lok Fem. |
| Cam to Mole Lok | Cam F to Mole Lok Male |
| Paralleling T | M-M-F |
| Tapping T | M-F-F |
| Cam Reducer | 400A F - 150A F |
| Cam Reducer | 400A M - 150A F |
| Cam Reducer | 400A F - 150A M |
| Cam Reducer | 400A M - 150A M |

A B C D E F G H

CA3M-E
 CA3M-B
 CA3F
 CDMM
 CDFF
 CLAM
 CLAF
 CPT
 CTT
 CLMADFF
 CLMADMF
 CLMADFM
 CLMADMM



CLS Assembled Adapters

| | |
|--------------------|---------|
| Soft Paralleling T | M-M-F |
| Soft Tapping T | M-F-F |
| Reverse Soft 3Fer | F-M-M-M |
| Soft 3Fer | M-F-F-F |

*WHITE AND GREEN ONLY

A B C D E

CPTFST
 CTFST
 CA3MST*
 CA3FST



Cam Technology Product Number Suffix Codes

Series CL, CLS, CLM + Color + .OEM

Example: CPTFST-A.OEM